

**Hydraulics
and Related
Components****Page No.****1****Pump Rebuild Kits
and Related Components****2****Shaft, Vane & Rotor Kits
and Related Components****3****Piston, Ring, Cylinder Sets,
and Related Components****4****Lift Cover Arm, Shafts, Draft Control Quadrant
and Related Components****5****Lift Cover Repair Kits, Gaskets, O-Rings
and Related Components**

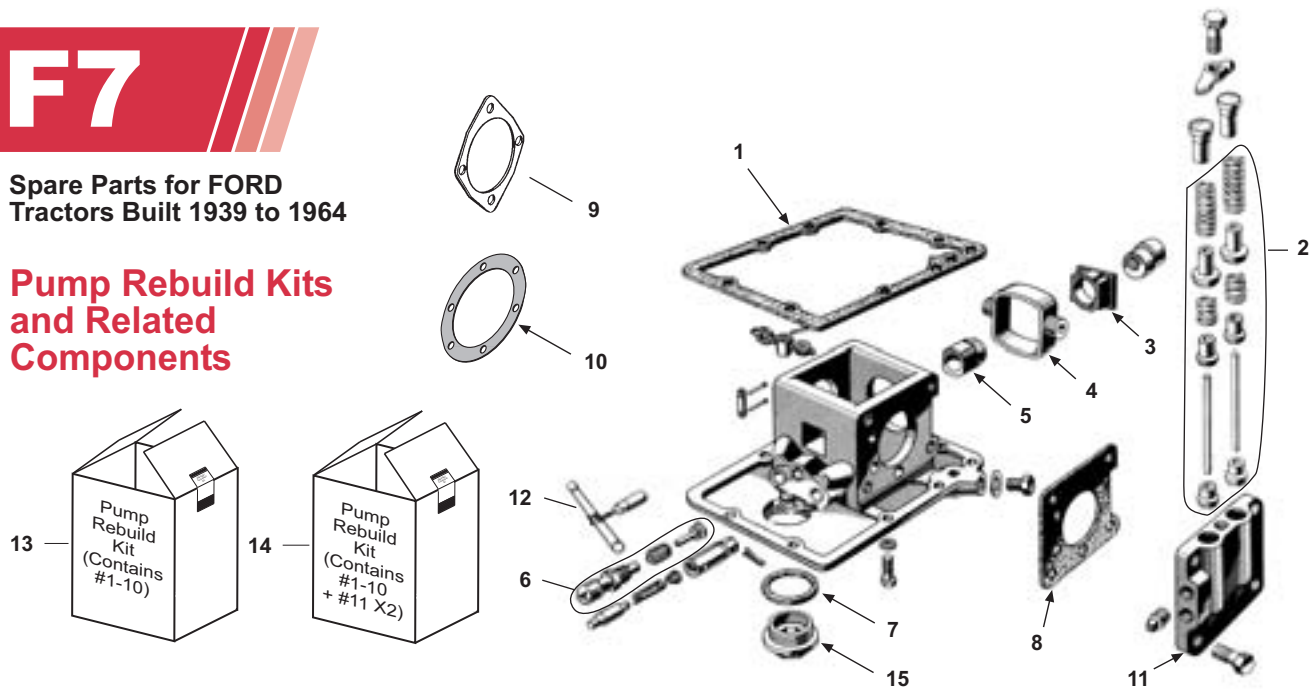
Please see Index for alternative O.E. part numbers.

These parts are Sparex parts and are not manufactured by the Original Equipment Manufacturer.
Original Equipment Manufacturers names, part numbers and descriptions are quoted for reference purposes only.

F7

Spare Parts for FORD
Tractors Built 1939 to 1964

Pump Rebuild Kits and Related Components



	SPAREX No.	DESCRIPTION	EQUIVALENT	TRACTOR MODEL
1	S.61320	Gasket - Pump Base	9N611	9N, 2N, 8N
2	S.61324	Chamber Repair Kit (For 1 Chamber)		9N, 2N, 8N
3	S.74009	Cam Block	9N617A	9N, 2N, 8N
4	S.74010	Piston	9N615	9N, 2N, 8N
5	S.60449	PTO Shaft Bushing	9N649A	9N, 2N, 8N
6	S.60023	Safety Valve	8N638	9N, 2N, 8N
7	S.61323	Gasket - Drain Plug	8N7011	9N, 2N, 8N
8	S.61321	Gasket - Valve Chamber	9N613	9N, 2N, 8N
9	S.61322	Gasket - PTO Shaft Housing	C5NN747A	9N, 2N, 8N, NAA, Jubilee, 600, 700, 800, 900, 601, 701, 801, 901, 2000, 4000
10	S.03352	Gasket - PTO Shifter Plate	9N4131	9N, 2N, 8N NAA, Jubilee, 600, 700, 800, 900, 601, 701, 801, 901, 2000, 4000
11	S.61319	Valve Chamber - LH or RH (Empty) Uses S.61324		9N, 2N, 8N
12	S.60057	Control Valve	9N640	9N, 2N
13	S.61325	Pump Rebuild Kit (Complete) (Includes #1-10)		9N, 2N, 8N
14	S.61725	Pump Rebuild Kit (Complete) (Includes #1-10 + #11 x2)		9N, 2N, 8N
15	S.60340	Plug - Filler (Lift Cover) Uses S.61323	9N7010	NAA, Jubilee, 600, 700, 800, 900, 601, 701, 801, 901, 2000, 4000
15	S.60340	Drain Plug - Hydraulic Pump	9N7010	9N, 2N, 8N

Please see Index for alternative O.E. part numbers.

These parts are Sparex parts and are not manufactured by the Original Equipment Manufacturer. Original Equipment Manufacturer names, part numbers and descriptions are quoted for reference purposes only.

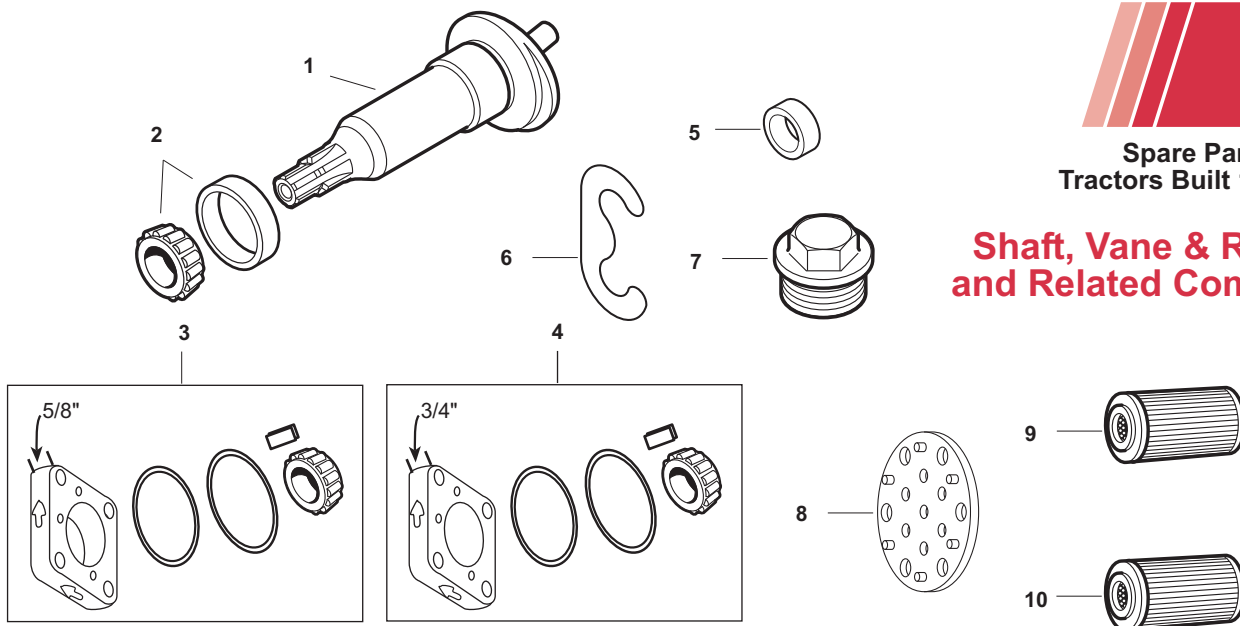
1 - A

PUMP REBUILD KITS AND RELATED COMPONENTS

	<u>Sparex No.</u>	<u>Price</u>
1.	S.61320	\$1.50
2.	S.61324	\$21.82
3.	S.74009	\$48.32
4.	S.74010	\$31.50
5.	S.60449	\$21.90
6.	S.60023	\$43.00
7.	S.61323	\$1.58
8.	S.61321	\$0.92
9.	S.61322	\$0.32
10.	S.03352	\$0.55
11.	S.61319	\$126.37
12.	S.60057	\$36.58
13.	S.61325	\$298.17
14.	S.61725	\$436.45
15.	S.60340	Call for Price
15.	S.60340	Call for Price

WE ARE NOT RESPONSIBLE FOR MIS-PRINTS OR PRICE CHANGES

Shaft, Vane & Rotor Kits and Related Components



SPAREX No.	DESCRIPTION	EQUIVALENT	TRACTOR MODEL
1	S.65430 Wobble Shaft (NAA600D & NCA600F Pumps)	EC0N966AA	NAA, Jubilee, 600, 700, 800, 900, 601, 701, 801, 901, 2000, 4000 (w/ Piston Pump)
2	S.02975 Bearing & Cup (LM67048, LM67010)	D5NN1201A D5NN1202A	NAA, Jubilee, 600, 700, 800, 900, 601, 701, 801, 901, 2000, 4000 (w/ Piston Pump)
3	S.60990 Vane & Rotor Kit (5/8" Wide)	CPN972B	NAA, Jubilee
4	S.60192 Vane & Rotor Kit (3/4" Wide)	CPN972C	NAA, Jubilee, 600, 700, 800, 900
5	S.04433 Pump Shaft Seal	E97GF9	Dexta, Super Dexta, (Fordson Major, Power Major, Super Major 11/60-64)
6	S.04438 Pump Seal	C5NNF844A	(Super Dexta 4/63-64)
7	S.66181 Filler Plug (1 9/16" Thread)	957E7010	Dexta, Super Dexta, (Fordson Major, Power Major, Super Major 11/60-64)
8	S.61864 Hydraulic Plate Assembly	310205	NAA, Jubilee, 600, 700, 800, 900, 601, 701, 801, 901, 2000, 4000
9	S.66183 Filter - Steel	C5NNN832C	(Fordson Major, Power Major, Super Major 11/60-64)
10	S.76548 Filter - Paper	C5NNN832C	(Fordson Major, Power Major, Super Major 11/60-64)

Please see Index for alternative O.E. part numbers.

These parts are Sparex parts and are not manufactured by the Original Equipment Manufacturer.
Original Equipment Manufacturer names, part numbers and descriptions are quoted for reference purposes only.

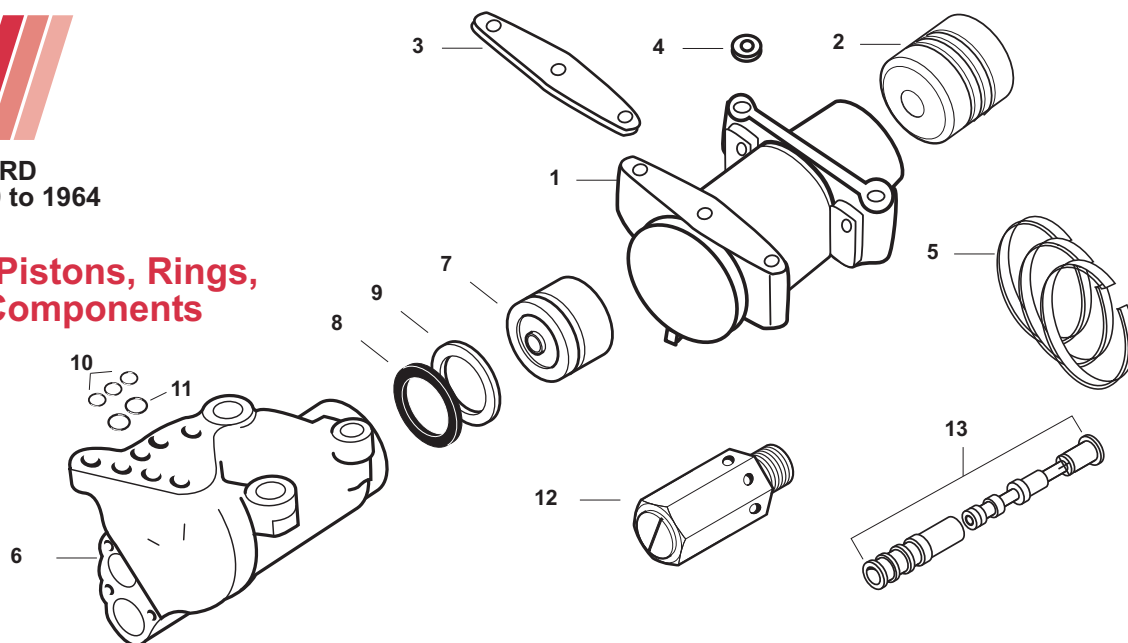
2 - A

SHAFT, VANE & ROTOR KITS AND RELATED COMP.

	<u>Sparex No.</u>	<u>Price</u>
1.	S.65430	\$61.82
2.	S.02975	\$6.67
3.	S.60990	\$408.33
4.	S.60192	\$408.33
5.	S.04433	\$1.33
6.	S.04438	\$2.40
7.	S.66181	\$16.62
8.	S.61864	\$27.18
9.	S.66183	\$10.57
10.	S.76548	\$8.80

WE ARE NOT RESPONSIBLE FOR MIS-PRINTS OR PRICE CHANGES

Lift Cylinder, Pistons, Rings, and Related Components



SPAREX No.	DESCRIPTION	EQUIVALENT	TRACTOR MODEL
1	S.42228 Cylinder - 2 1/2" Bore	9N510D	9N, 2N, 8N
2	S.61588 Piston - 3 Ring	9N530B	9N, 2N, 8N, NAA, Jubilee
3	S.42212 Gasket - Cylinder to Lift Cover	9N553	9N, 2N, 8N
4	S.42213 Gasket - Cylinder to Lift Cover	9N552	9N, 2N, 8N
5	S.61589 3 Ring Set	9N675	9N, 2N, 8N, NAA, Jubilee
6	S.60580 Cylinder w/ Unload Valve, Control Valve (Modification needed. Call for details)	C5NN477B	600, 700, 800, 900, 601, 701, 801, 901, 2000, 4000, Dexta, Super Dexta
7	S.66192 Piston	C5NN530B	600, 700, 800, 900, 601, 701, 801, 901, 2000, 4000, (*Dexta, Super Dexta)
8	S.04584 Back-up Ring	NCA473A	600, 700, 800, 900, 601, 701, 801, 901, 2000, 4000, (*Dexta, Super Dexta)
9	S.01960 O-Ring Seal	87111S95	600, 700, 800, 900, 601, 701, 801, 901, 2000, 4000, (*Dexta, Super Dexta)
9	S.04723 Seal - Gland (2 3/4" OD)	E27N994693B	Fordson Major, Fordson Power Major (52-11/60)
9	S.04724 Seal - Gland (3 3/8" OD)	E1ADDN994693	Power Major, Super Major (12/60-64)
9	S.04722 Seal - Gland	E11GF9	(Dexta, Super Dexta w/ Original Piston)
10	S.01903 O-Ring - Cylinder to Lift Cover	87006S94	600, 700, 800, 900, 601, 701, 801, 901, 2000, 4000, Dexta, Super Dexta
11	S.01926 O-Ring - Cylinder to Lift Cover	87010S94	600, 700, 800, 900, 601, 701, 801, 901, 2000, 4000, Dexta, Super Dexta
12	S.05602 Cylinder Relief Valve	E1ADDN984	Fordson Major, Power Major, Super Major (11/60-64)
13	S.04619 Control Valve & Bushing (White)	C7NN481D	Dexta, Super Dexta, Fordson Major, Power Major, Super Major (11/60-64)
13	S.04620 Control Valve & Bushing (Blue)	C7NN481E	Dexta, Super Dexta, Fordson Major, Power Major, Super Major (11/60-64)
13	S.04621 Control Valve & Bushing (Yellow)	C7NN488K	Dexta, Super Dexta, Fordson Major, Power Major, Super Major (11/60-64)
13	S.04622 Control Valve & Bushing (Green)	C7NN481G	Dexta, Super Dexta, Fordson Major, Power Major, Super Major (11/60-64)
13	S.04808 Control Valve & Bushing (Orange)	C7NN481H	Dexta, Super Dexta, Fordson Major, Power Major, Super Major (11/60-64)
<p>*Note: Original Dexta, Super Dexta Lift Pistons were fitted with a Gland Style Seal. If replacing, original Piston with S.66192, use S.01962 O-Ring and S.04584 Back-up Ring also. Original Gland Seal is available (S.04722).</p>			

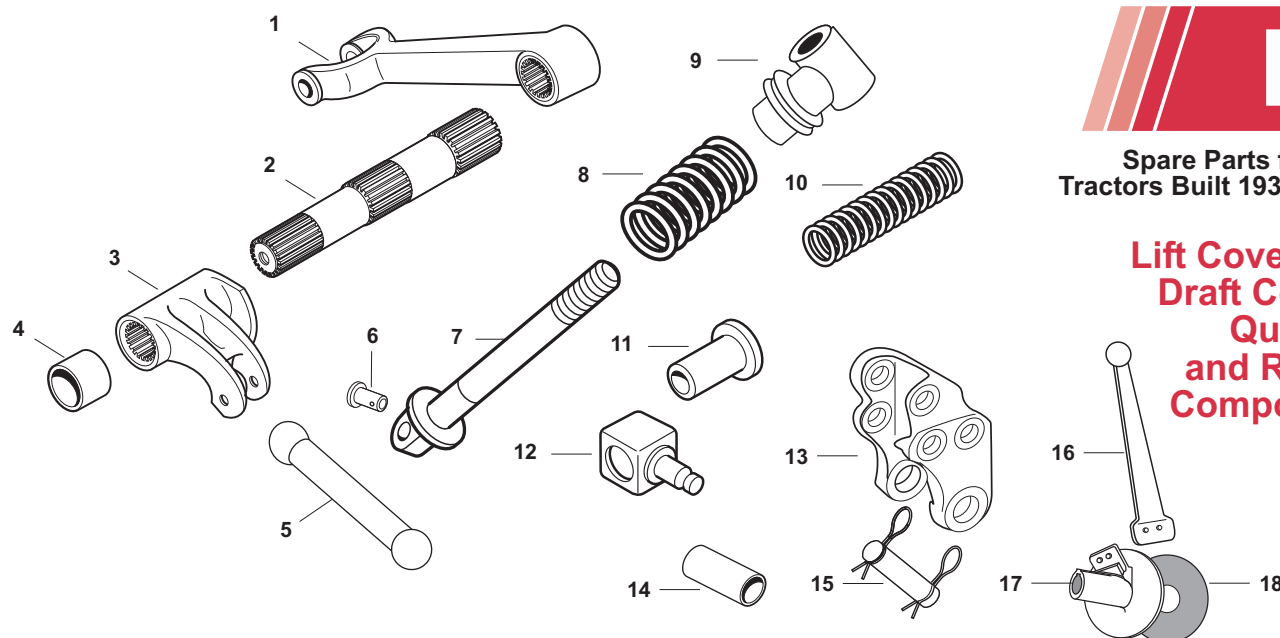
3 - A

LIFT CYLINDER, PISTONS, RINGS AND RELATED COMP.

	<u>Sparex No.</u>	<u>Price</u>
1.	S.42228	\$111.67
2.	S.61588	\$19.02
3.	S.42212	\$0.72
4.	S.42213	\$1.15
5.	S.61589	\$5.83
6.	S.60580	\$648.33
7.	S.66192	\$26.98
8.	S.04584	\$1.70
9.	S.01960	\$0.38
9.	S.04723	\$5.68
9.	S.04724	\$4.05
9.	S.04722	\$7.07
10.	S.01903	\$0.03
11.	S.01926	\$0.05
12.	S.05602	\$23.53
13.	S.04619	\$76.47
13.	S.04620	\$76.47
13.	S.04621	\$76.47
13.	S.04622	\$76.47
13.	S.04808	\$68.40

WE ARE NOT RESPONSIBLE FOR MIS-PRINTS OR PRICE CHANGES

**Lift Cover Arm,
Draft Control,
Quadrant
and Related
Components**



	SPAREX No.	DESCRIPTION	EQUIVALENT	TRACTOR MODEL
1	S.42171	Arm	9N543B	9N, 2N, 8N, NAA, Jubilee, 600, 700, 800, 900, 601, 701, 801, 901, 2000, 4000,
1	S.66206	Arm - less Auto Hitch	E1ADDN994620A	Fordson Major, Power Major, Super Major
2	S.60630	Lift Shaft	NCA544B	9N, 2N, 8N, NAA, Jubilee, 600, 700, 800, 900, 601, 701, 801, 901, 2000, 4000
2	S.66205	Lift Shaft	E1ADDN544	Fordson Major, Fordson Power Major, Fordson Super Major (11/60-64)
3	S.60570	Arm	8N545B	8N
3	S.66201	Arm	E1ADDN545B	Fordson Super Major (6/63-64)
4	S.41425	Bushing - Lift Shaft (4 Required) (2" x 2 3/8" x 1 1/8")	9N531C 86534029	9N, 2N, 8N, NAA, Jubilee, 600, 700, 800, 900, 601, 701, 801, 901, 2000, 4000, Dexta, Super Dexta
5	S.66195	Lift Rod	957E526 86563314	9N, 2N, 8N, NAA, Jubilee, 600, 700, 800, 900, 601, 701, 801, 901, 2000, 4000, Dexta, Super Dexta
6	S.01468	Clevis Pin	352594S	Same as Above
7	S.60585	Plunger (Draft Control) (5/8" x 24 Thread)	8N541B	9N, 2N, 8N, NAA, Jubilee, 600, 700, 800, 900, 601, 701, 801, 901, 2000, 4000, Dexta, Super Dexta
8	S.41428	Hydraulic Control Spring	9N547B	9N, 2N, 8N, NAA, Jubilee, 600, 800, 601, 801, 2000, 4000 (except Rowcrop), Dexta, Super Dexta
9	S.60586	Yoke (5/8" x 24 Thread)	9N546C	9N, 2N, 8N
10	S.66216	Spring - Draft Control	957E539	Dexta, Super Dexta
11	S.66217	Bushing - Draft Control	957E691	Dexta, Super Dexta
12	S.66222	Swivel - Draft Control	957E692	NAA, Jubilee, 600, 700, 800, 900, 601, 701, 801, 901, 2000, 4000, Dexta, Super Dexta
13	S.61643	Rocker	NCA535A	9N, 2N, 8N, NAA, Jubilee, 600, 800, 601, 801, 2000, 4000,
14	S.66250	Bushing - Rocker to Center Housing	E1NNB681AA E66GF9	Dexta, Super Dexta
15	S.61318	Clevis Pin w/ Clips (Not original) Rocker to Center Housing	8N486B	9N, 2N, 8N, NAA, Jubilee, 600, 800, 601, 801, 2000, 4000, (except Rowcrop)
16	S.66598	Lift Control Lever w/ Ball End	2N512	9N, 2N, 8N, NAA, Jubilee, 600, 700, 800, 900, 601, 701, 801, 901, 2000, 4000
17	S.66515	Lift Control Plate (Cast Aluminium as Original)	2N516A2	9N, 2N, 8N, NAA, Jubilee, 600, 700, 800, 900, 601, 701, 801, 901, 2000, 4000
18	S.60635	Friction Disc	C5NN518B	Same as Above

Please see Index for alternative O.E. part numbers.

These parts are Sparex parts and are not manufactured by the Original Equipment Manufacturer.
Original Equipment Manufacturer names, part numbers and descriptions are quoted for reference purposes only.

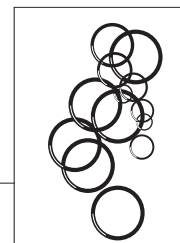
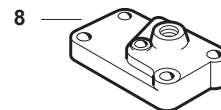
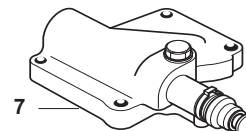
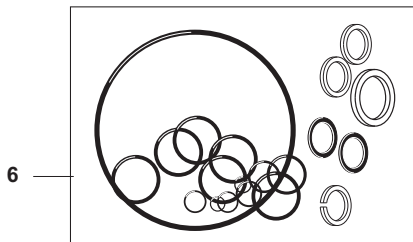
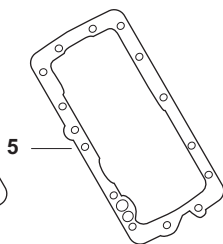
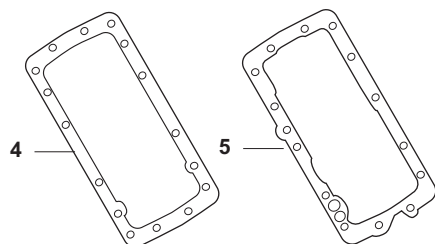
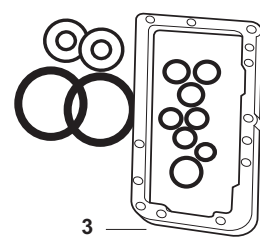
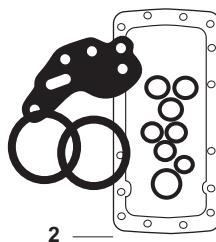
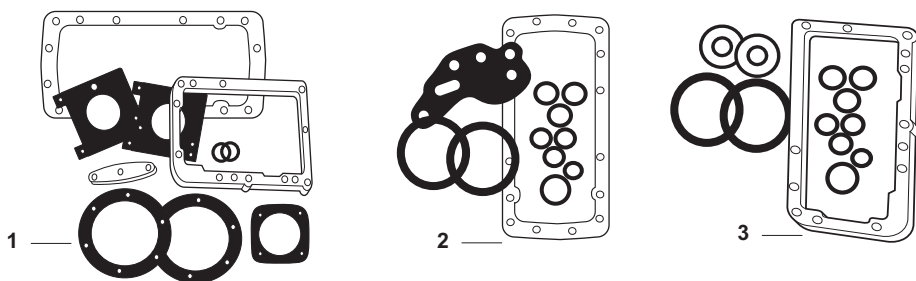
4 - A

LIFT COVER ARM, DRAFT CONTROL, QUADRANT AND
RELATED COMPONENTS

<u>Sparex No.</u>	<u>Price</u>
1. S.42171	\$69.27
1. S.66206	\$122.48
2. S.60630	Call for Price
2. S.66205	\$122.48
3. S.60570	\$139.67
3. S.66201	\$124.33
4. S.41425	\$4.60
5. S.66195	\$15.98
6. S.01468	\$1.00
7. S.60585	\$36.42
8. S.41428	\$35.17
9. S.60586	\$32.68
10. S.66216	\$5.50
11. S.66217	\$6.93
12. S.66222	\$25.87
13. S.61643	\$82.83
14. S.66250	\$17.73
15. S.61318	\$2.45
16. S.66598	\$19.90
17. S.66515	\$20.97
18. S.60635	\$1.02

WE ARE NOT RESPONSIBLE FOR MIS-PRINTS OR PRICE CHANGE

Life Cover Repair Kits, Gaskets, O-Rings and Related Components



SPAREX No.	DESCRIPTION	EQUIVALENT	TRACTOR MODEL
1	S.61504 Lift Cover Repair Kit Contains: Gaskets for Lift Cover & Pump, Piston, O-Ring, Back-up Ring	LCRK928	9N, 2N, 8N
2	S.61505 Lift Cover Repair Kit Contains: Gaskets & O-Rings for Lift Cover, Piston, O-Ring, Back-up Ring	LCRK5354	NAA, Jubilee
3	S.61506 Lift Cover Repair Kit Contains: Gaskets & O-Rings for Lift Cover, Piston, O-Ring & Back-up Ring	LCRK5564	600, 700, 800, 900, 601, 701, 801, 901, 2000, 4000, (Dexta, Super Dexta If Piston has been changed to O-Ring & Back-up Ring Style.) If Piston is original w/ single Gland Seal order S.04722 Gland also. See F7 / pg 3 / #9 Note.
4	S.42217 Lift Cover Gasket	NAA502A	9N, 2N, 8N, NAA, Jubilee
5	S.66301 Lift Cover Gasket	NCA502A	600, 700, 800, 900, 601, 701, 801, 901, 2000, 4000, Dexta, Super Dexta
6	S.04725 O-Ring & Seal Kit, (Lift Cover, Cylinder, Pump) Contains both old and new syle Piston Seals		Dexta, Super Dexta
6	S.04726 O-Ring & Seal Kit (Lift Cover, Cylinder, Pump)		Fordson Major, Fordson Power Major
7	S.66232 Selector Valve		600, 700, 800, 900, 601, 701, 801, 901, 2000, 4000, Dexta, Super Dexta
8	S.66233 Blocking Plate Note: Longer bolts may be needed to mount plate	NCA475E	600, 700, 800, 900, 601, 701, 801, 901, 2000, 4000, Dexta, Super Dexta
9	S.11787 Flat Style Seal Kit		S.66232 Selector Valve, S.66233 Blocking Plate
9	S.11789 O-Ring Seal Kit		S.66232 Selector Valve, S.66233 Blocking Plate

5 -A

LIFE COVER REPAIR KITS, GASKETS, O-RINGS AND RELATED COMP.

	<u>Sparex No.</u>	<u>Price</u>
1.	S.61504	\$9.98
2.	S.61505	\$6.88
3.	S.61506	\$9.15
4.	S.42217	\$1.22
5.	S.66301	\$2.83
6.	S.04725	\$21.23
6.	S.04726	\$18.92
7.	S.66232	\$233.33
8.	S.66233	\$40.68
9.	S.11787	\$5.77
9.	S.11789	\$2.27

WE ARE NOT RESPONSIBLE FOR MIS-PRINTS OR PRICE CHANGES